



Healthcare Experience Overview

Construction and management of hospitals, medical clinics, and medical research facilities require certainty and precision. DBM Vircon provides comprehensive lifecycle solutions that are beyond traditional detailing. We create data-centric intelligent models using our customized proprietary workflows to create the highest quality data-centric models for use in healthcare.

Why DBM Vircon?

Cutting Edge Technology

Innovation in thought and tools are fundamental to our approach, and critical to the accuracy of your project.

Multi-Disciplined Approach

DBM Vircon regularly collaborates in multi-disciplinary teams and environments to deliver the best possible outcomes.

Over 55 Years' Experience

With experience on global projects since 1964 DBM Vircon has the expertise, systems, and capabilities to deliver your entire project.

Global Presence

With offices around the world, we offer 24-hour support – when our Perth office closes, our London office opens. This means we can meet the tightest of schedules and mitigate delays.

Cost Confidence

By eradicating clashes and design errors early on, rework and delays are significantly reduced, costs are confirmed in advance, and highly accurate quotes by suppliers can be provided without risk of variations.

Schedule Certainty

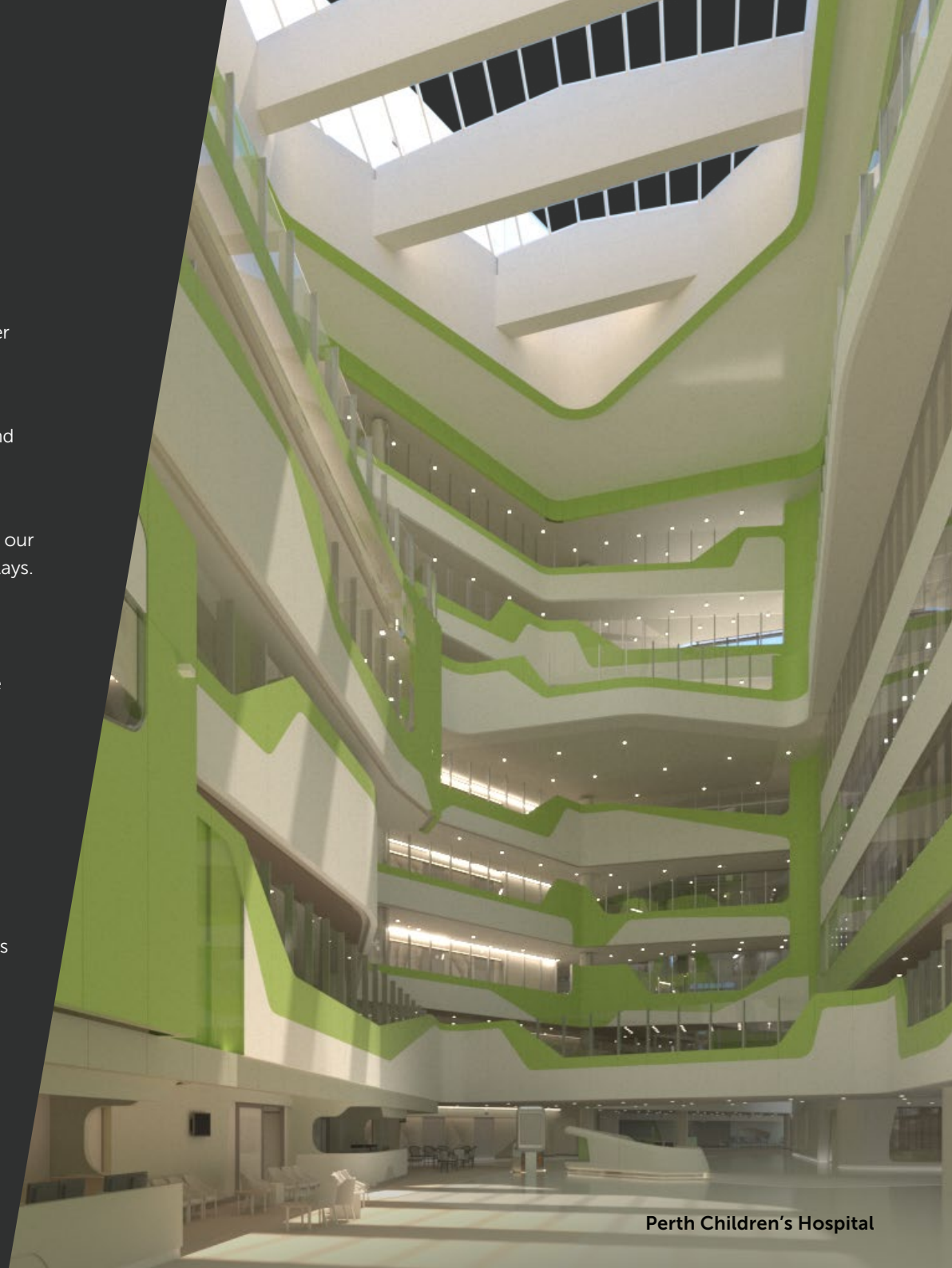
Our methodology avoids duplication of modeling activities typically experienced in the traditional 2D modeling environment. With a more accurate design completed earlier, schedule certainty is improved, and construction commences earlier.

Sophisticated Systems

Boasting global recognition, our custom-built proprietary Job Management System (JMS) is specifically designed to manage models, drawings, data, documentation, and deliverables effectively and efficiently for complex projects.

Stringent Quality Control

DBM Vircon utilizes rigorous quality assurance processes. All drawings are checked by our quality assurance system, with queries, variations and changes closed out by the project engineer before delivery to you.



Perth Children's Hospital

DBM Vircon in the Healthcare Sector

With an ageing society and a growing population, healthcare facilities play an increasingly critical role in our communities. Governments and health authorities face rising costs that must be met with innovative solutions for building, operating and maintaining hospitals, medical centres, and research institutes. DBM Vircon's global experience in complex projects allows us to deliver design excellence and modelling precision for:

- Hospitals
- Large-scale medical centres
- Medical clinics for specialists, general practitioners, and allied health professionals
- Aged care facilities and nursing homes

Our Experience in Healthcare

Loma Linda University Medical Center

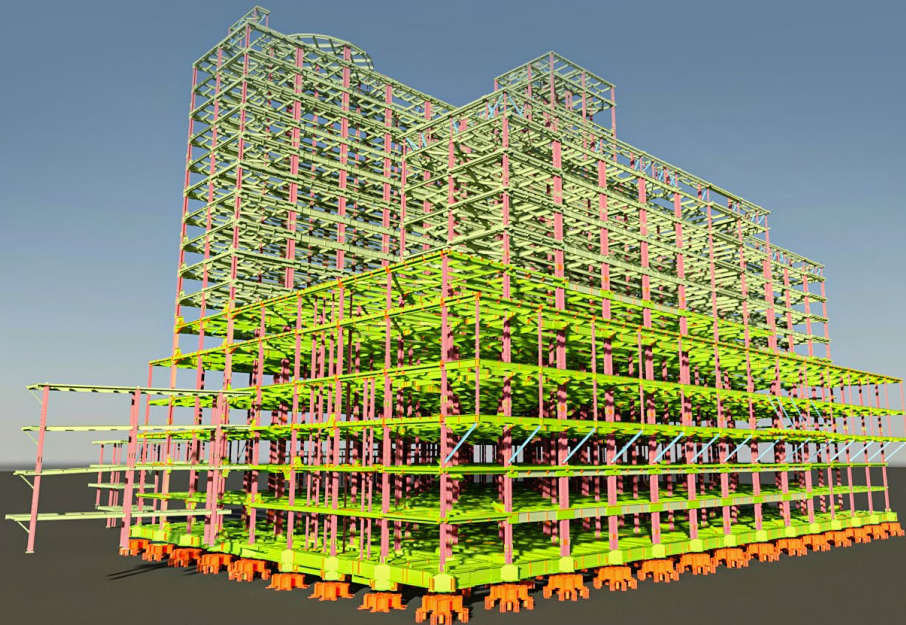
Client: **Schuff Steel**

Location: **Loma Linda, CA, USA**

Completed: 2020

DBM Vircon was involved in detailing the Loma Linda University Medical Center project. The hospital is made up of 6 main podium levels before the building splits into two towers, a 10-storey children's hospital and an 18-storey adult's hospital. This new structure is an extension to an existing hospital which has been built in the seismically active area.

Through a highly celebrated effort with detailing the connections, splice locations and penetration locations were fine-tuned to achievable constructible base level. Another key task was the interaction of the BRB brace connections and the SidePlate connections. The connection was designed with haunch plates above and below the SidePlate connections creating challenging fabrication and erection clearances that was also resolved through the detailing process.



Perth Children's Hospital

Client: **John Holland**

Location: **Perth, Western Australia**

Completed: 2018

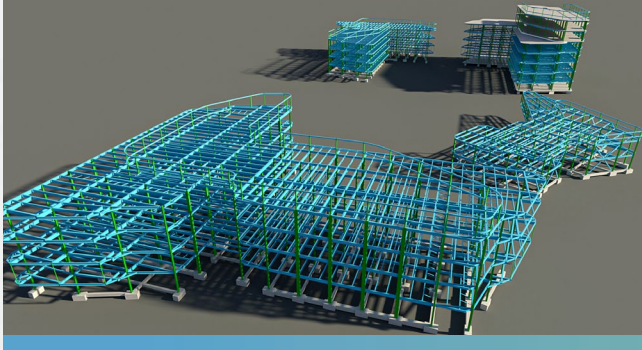
The Perth's Children's Hospital provides state of the art clinical care for future generations and facilities for paediatric research. DBM Vircon was responsible to manage the entire BIM strategy, implementation, and management for the project and placed BIM managers directly within the client's offices.

DBM Vircon implemented BIM solutions ranging from initial model setup and coordination strategies, through to 4D simulations, 5D cost extraction and work packaging, and the transition of the fully as-built model to the customer's facility management solution. A total of 167 separate models were created on various authoring software platforms by several consultants ranging from design consultants to subcontractors.



Our Experience in Healthcare

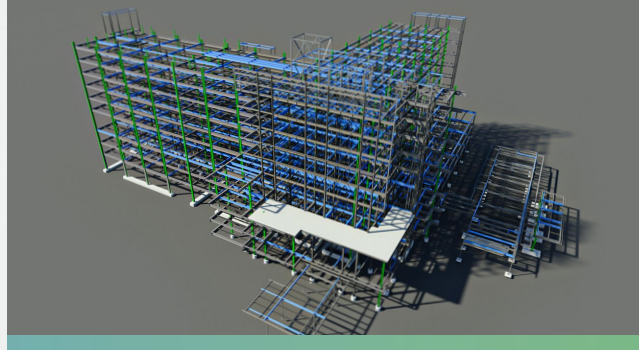
The Campus at Lincoln Center



Client: **Schuff Steel Company**
Location: **Foster City, California, USA**
Completed: **2016**

DBM Vircon's scope of work included the 3D BIM modeling and shop detailing of 1,000 tons of structural steel work on buildings A, B and D. The campus development is considered a world-class facility consisting of two class A laboratories and offices, a large central quad with an outdoor amphitheater and playing fields. The state-of-the-art biotech campus in Foster City is leased by Illumina Inc., the world leader in genomics.

Banner's Children Hospital



Client: **Schuff Steel Company**
Location: **Arizona, USA**
Completed: **2019**

There are many curved beams and angled concrete floors giving this building a sculptured look. DBM Vircon issued a total of 10,480 drawings for fabrication. To assist with the co-ordination of other trades, 3D steel models were provided to the general contractor on a weekly basis.

The hospital expansion will assist in increasing the space for women and infant care, housing labor, delivery services and new neonatal intensive care units.

Cathedral Hill Hospital



Client: **The Herrick Corporation**
Location: **San Francisco, California**
Completed: **2015**

DBM Vircon's scope included 3D BIM modelling, shop detailing of 12,000 tons of structural steelwork and fabrication drawings for all structural components. This project has a wide range of depressed and sloping slabs including ramps which has meant extensive coordination with the deck supplier has been carried out to ensure all deck support steel has been covered in the structural steel model.