



—
Making Design Constructible
and Assets Manageable





WHY DBM VIRCON?

Cutting Edge Technology

Continuous technology-first innovation, as well as having a software agnostic mindset, are fundamental to our approach - critical to the accuracy of your project.

Multi-Disciplined Approach

DBM Vircon regularly collaborates in multi-disciplinary teams and environments, working alongside engineers, fabricators, and civil teams to deliver the best possible outcome for your project.

Over 55 Years' Experience

With experience on global projects since 1964, DBM Vircon has the expertise, systems, and capabilities to deliver your entire project.

Global Presence

With offices around the world, we offer 24-hour support - when our Perth office closes, our London office opens. This means we can meet the tightest of schedules and mitigate delays.

Trusted by:

áurecon

**Barton
Malow**

BHP

MULTIPLEX





Cost Confidence

By eradicating clashes and design errors early on, rework and delays are significantly reduced, costs are confirmed in advance, and highly accurate quotes by suppliers can be provided without risk of variations.

Schedule Certainty

Our methodology avoids duplication of activities typically experienced in the traditional 2D modeling environment. With a more accurate design completed earlier, schedule certainty is improved and construction commences earlier.

Sophisticated Systems

Boasting global recognition, our custom-built proprietary Job Management System (JMS) is specifically designed to effectively and efficiently manage models, drawings, data, documentation and deliverables for complex projects.

Stringent Quality Control

Not only is DBM Vircon ISO 9001 certified, we utilize rigorous quality assurance processes. All drawings are checked by our quality assurance system, with queries, variations and changes closed out by the project engineer before delivery to you.



STEEL MODELING AND DETAILING

Millimeter Perfect Modeling and Detailing

DBM Vircon's expert steel detailers make design constructible, translating information from clients and designers into live, data-centric 3D models and accurate shop drawings.

With expertise in complex projects and a focus on leading-edge technology, our approach reduces human error, all but eliminates rework and schedule delays, and minimizes the communication breakdowns typical of a traditional 2D environment. The result? Scheduling and cost certainty for the entire project team.

We go beyond traditional detailing to deliver full lifecycle solutions. Our customized proprietary workflows for Tekla, Navisworks, Rhino and other software deliver everything from 3D concept visualizations, and easily fabricated and erected build-ready plans, through to intelligent models for long-term asset management.



Bridges

New San Francisco - Oakland Bay Bridge
San Francisco Bay Area, California, USA



Commercial

Google Bay View
Mountain View, California, USA



Industrial

Hope Downs 4 Mine
Pilbara, Western Australia



STEEL DETAILING SHOWCASE

Check out a showcase of award winning projects, including SoFi Stadium, Hong Kong International Airport, and The West Hollywood Sunset Spectacular.

DIGITAL ENGINEERING

Our digital engineering services add value at every stage of the Design-Build-Manage lifecycle, from initial scoping and 3D visualization, through to holistic ongoing management.

Digital Project Management

With our agnostic software and centralized data mapping, we facilitate collaboration by breaking down silos, clarify decision-making, de-risk construction, and streamline project delivery.

Working collaboratively with the entire project team, we can facilitate governance, transparency and enhanced decision making, for better project outcomes and long-term savings.

Digital Engineering Advisory

Our advisory practice has grown from our strong pedigree in project delivery. We leverage our extensive practical experience delivering projects for contractors and asset owners, and tailor solutions for clients looking to digitally transform their AEC or Asset Management information management processes. We deliver value and efficiency to current processes, and position our clients to ward off challenges and take advantage of future opportunities.

Serviced Asset Information Management (SAIM)

Serviced Asset Information Managed, or SAIM, is the provision of ongoing services to create and maintain a facilities asset information model. The model acts as a Digital Twin of the asset - a virtual representation of the real-world asset. DBM Vircon's SAIM service can include the creation of the foundational data set used in Digital Twins, and then focuses on ongoing management of the Asset Information Model, or Digital Twin, to maintain the accuracy of the model for the life of the asset.

Visualization, Virtual & Augmented Reality

Providing diverse experience and team integration, we deliver superior visual outcomes through realistic and technically accurate representations of complex solutions, delivering increased levels of communication, clarity and engagement for all stakeholders.

Our Visualization team remains unique through the blending of technology, engineering precision and creative flair across the Design-Build-Manage lifecycle.



VISUALIZATION SHOWREEL

Check out an example of DBM Vircon's Visualization services.

Digital Twins

With the DBM Vircon Digital Engineering team being established creators and curators of foundational data sets, we help ensure that these can be utilized across different platforms and digital technology use cases.

With years of experience in supporting clients through multi-billion dollar project specification, procurement and negotiations, as well as client digital scope assurance, DBM Vircon is positioned to evaluate the technology and processes required and deliver the integration of existing systems into a Digital Twin platform.



WHAT IS A DIGITAL TWIN?

Read DBM Vircon's take on where this technology is up to.

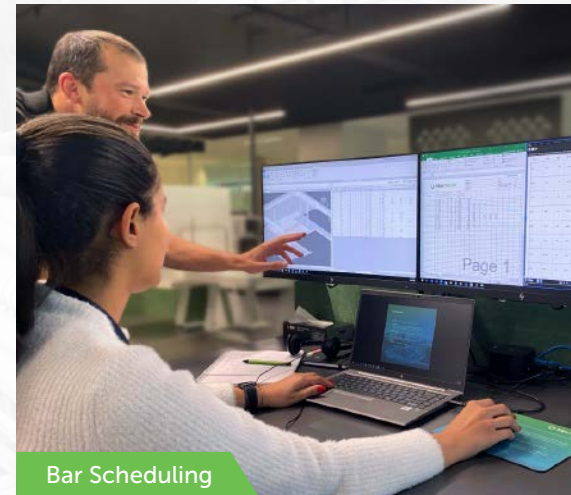
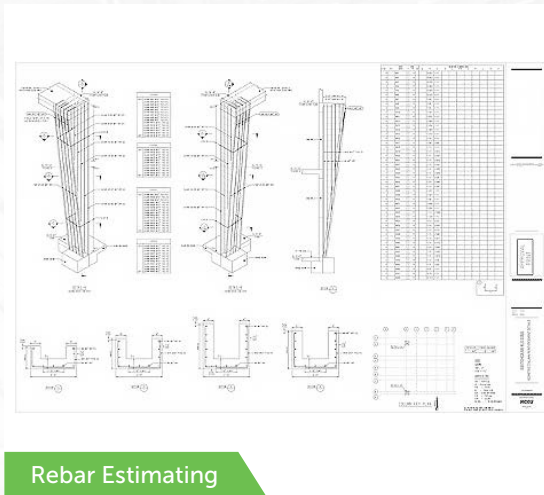
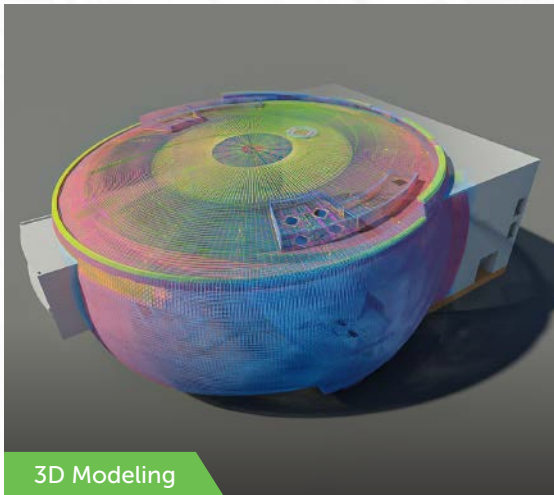
SERVICE FOCUS

CONCRETE AND REBAR MODELING AND DETAILING

With industry leading expertise in estimating, detailing, and modeling of complex reinforced concrete construction projects, DBM Vircon plays a pivotal role in helping move projects from the design phase to the construction phase. Having successfully delivered iconic projects globally in various sectors around the world, you can confidently partner with us to support all your reinforced concrete modeling, detailing, and estimating needs.

Supplemented by stringent QA/QC procedures, we can help eliminate field placement errors, while allowing information transfer among project stakeholders to help validate project details. This results in reduced issues, so rebar fabrication and assembly can be expedited with fewer changes in field.

REBAR AND CONCRETE SERVICES



GEFFEN THEATRE VIDEO

With 900 Tons of Rebar, have a look at the remarkable Geffen Theatre project video.

INDUSTRIAL DESIGN

Piping

DBM Vircon offers a wide variety of piping design and detailing services, ranging from small stand-alone packages through to major onshore and offshore energy and resource sector projects. Our design deliverables encompass site and plot plans, general arrangement drawings, vessel nozzle and orientation drawings, and underground piping and utility plans.



With customizable and fully traceable piping isometrics, we deliver models complete with material, commodity code and weld traceability, as well as cut lengths, end preparation and spool numbering details.

Mechanical

DBM Vircon provides mechanical design and detailing services for a range of tanks, vessels and complex machinery and mechanical platework. Our technologically advanced and data-rich models provide the information needed to precisely plan your project, maximizing value and time efficiencies without compromising quality.

Structural

DBM Vircon's integrated structural design and detailing team use a combination of software including Tekla and Advance Steel to deliver a wide range of industrial projects. We work closely and collaboratively with our clients to offer a full range of structural design and data services suited to the industrial sector.

Within a single project, we can collaborate on thousands of models, develop and manage tens of thousands of vendor equipment items, and manage countless metadata fields across extremely large datasets, all without sacrificing the level of quality and control.

Modular Process Units

DBM Vircon offers multiple solutions for skid-mounted and modular packages such as smaller metering skids, wellhead separators, nitrogen and dehydration packages to large, complex and integrated LNG units.

Implementation of the latest digital engineering technologies provides comprehensive solutions and real-time visibility on project deliverables through all phases of the project. Modular process units allow clients the opportunity to reduce project schedules, recouping invested capital in an accelerated time frame and reducing the amount of manpower required on-site.



OUR INDUSTRIAL DESIGN CAPABILITIES

Learn about engineering, design and detailing of pipework projects throughout their entire life cycle

4 CONTINENTS, 8 COUNTRIES, 850+ HIGHLY SKILLED STAFF

DBM Vircon, one of the most comprehensive and sophisticated 3D modeling, detailing and digital engineering companies in the world.



WHAT OUR CLIENTS SAY ABOUT US



"DBM Vircon brought a level of vision and smarts to the table that has put our project on the leading edge of how large-scale infrastructure projects like ours build and utilise 3D model."



Monadelphous

"High quality engineering solutions that enabled us to deliver projects on time and within budget."



"A partner committed to exploring new options and delivering economical solutions."



www.dbmvircon.com | website@dbmvircon.com



[LinkedIn](#)



DBMVircon.com